

ORACLE®



Oracle BI Enterprise Edition New Features Summary

Release: 11.1.1.6.0, 11.1.1.6.2

Exalytics



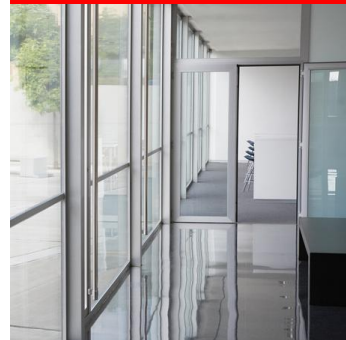
Oracle Exalytics

Engineered System for BI Foundation Suite



- BI Foundation Suite with In-Memory Analytics
- TimesTen In-Memory Database for Exalytics
- Optimized Hardware
- Systems Software

Endeca



Oracle Endeca Information Discovery

Enterprise Platform for Business Self-Service and Discovery

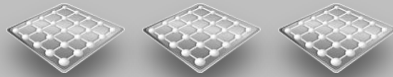
Studio

Interactive Business Discovery
Create and Share Apps



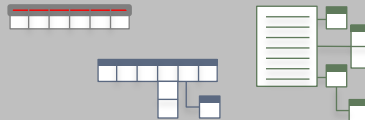
Endeca Server

Hybrid Search/Analytical Database
Flexible Data Model



Integration Suite

Data Integration and Enrichment
Structured and Unstructured



Helps organizations **quickly explore all relevant data.**

- Combines diverse and changing information from disparate systems.
- Automatically organizes information for exploration and analysis.
- Enables rapid assembly of easy-to-use discovery applications.



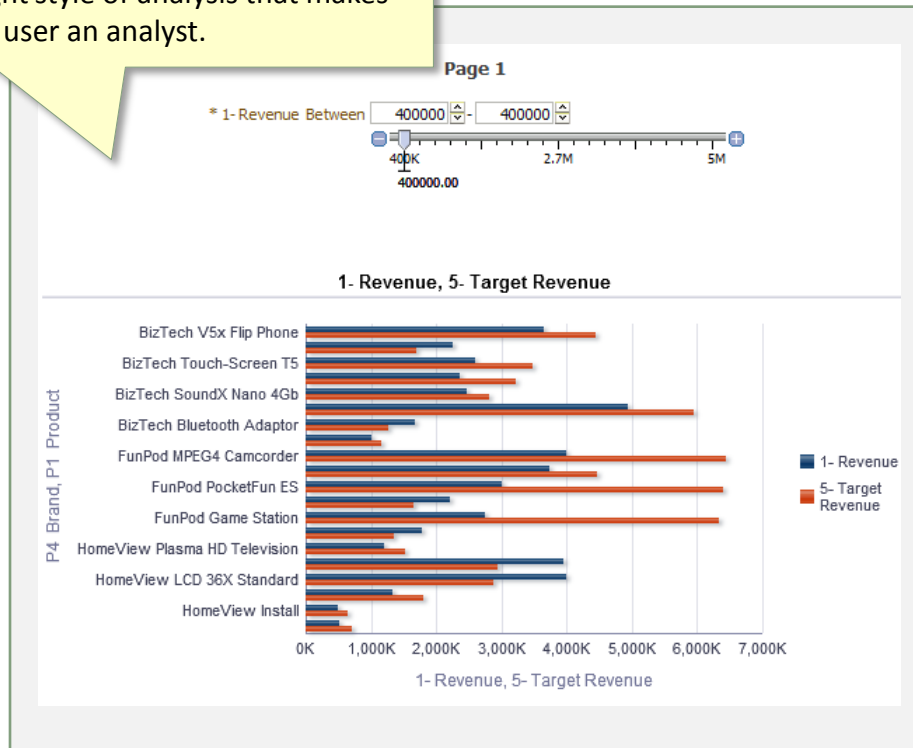
Interactive Dashboards and Answers



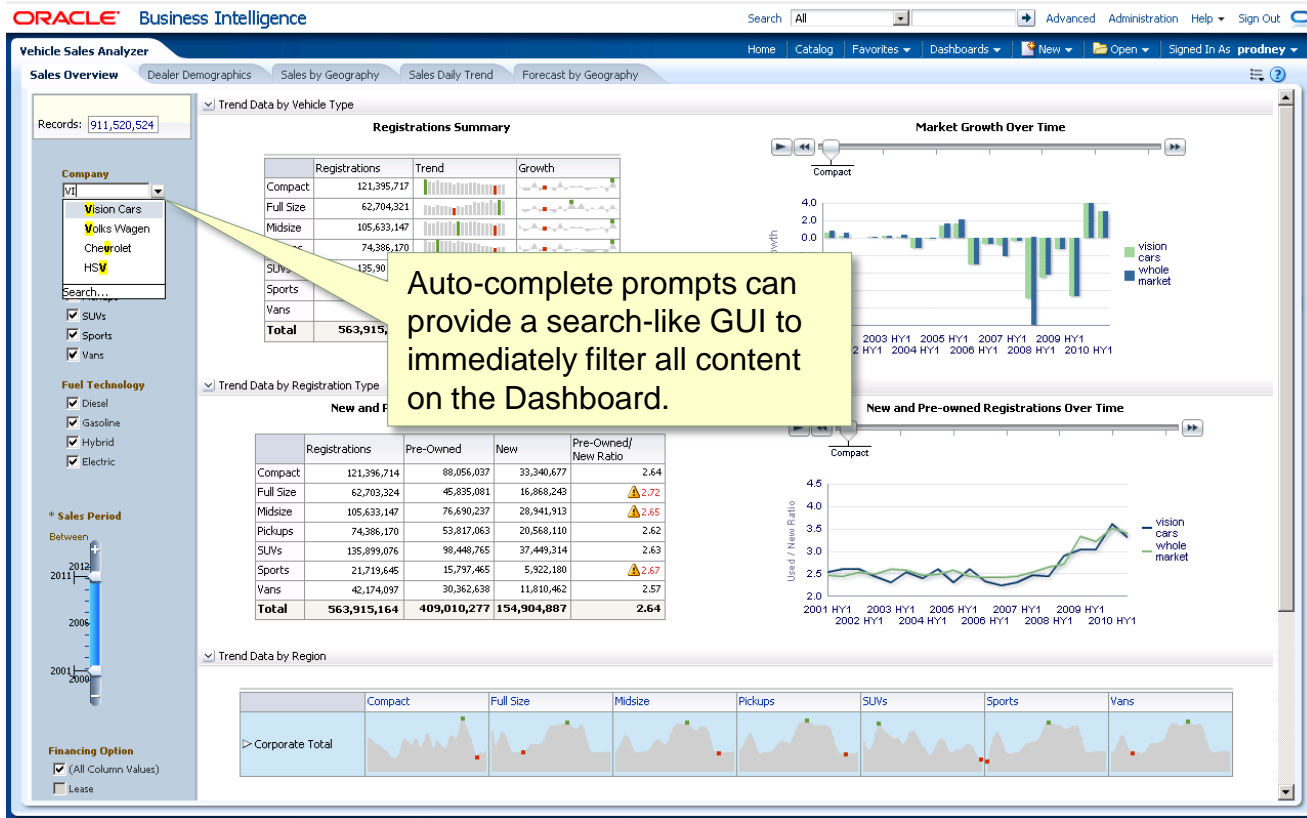
Go-less Prompts

Go-less Prompts promote a speed-of-thought style of analysis that makes every user an analyst.

- Optional “Apply/Reset” button for Dashboard Prompts
- Enable
 - Rapid feedback and responsive user interaction
 - Performant cascading updates of dependent prompts
- Administrator can enable/disable via instanceconfig entry
- Or set always ON (regardless of BI Machine Flag)

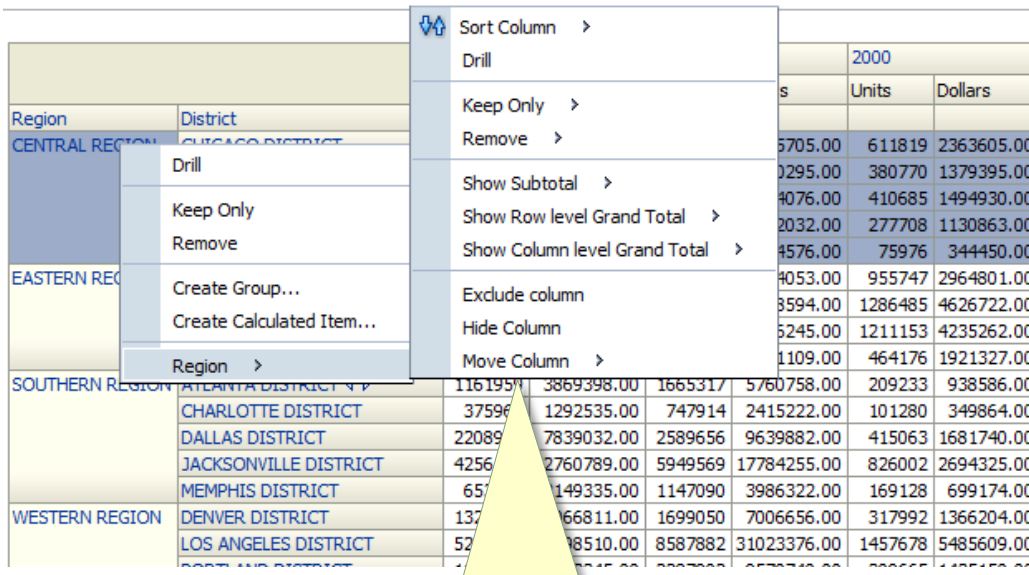


Auto-complete Prompt



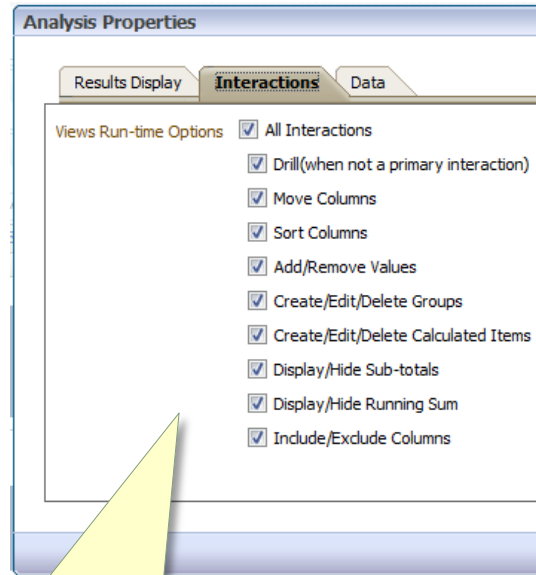
Contextual / Right-Click Interactions

Deliver ad hoc capabilities to the masses



Region	District	Units	Dollars
CENTRAL REGION	CHICAGO DISTRICT	5705.00	611819 2363605.00
		0295.00	380770 1379395.00
		4076.00	410685 1494930.00
		2032.00	277708 1130863.00
		4576.00	75976 344450.00
EASTERN REGION		4053.00	955747 2964801.00
		8594.00	1286485 4626722.00
		5245.00	1211153 4235262.00
		1109.00	464176 1921327.00
SOUTHERN REGION	ATLANTA DISTRICT	1161951	3869398.00 1665317 5760758.00 209233 938586.00
	CHARLOTTE DISTRICT	37596	1292535.00 747914 2415222.00 101280 349864.00
	DALLAS DISTRICT	22089	7839032.00 2589656 9639882.00 415063 1681740.00
	JACKSONVILLE DISTRICT	4256	2760789.00 5949569 17784255.00 826002 2694325.00
	MEMPHIS DISTRICT	65	149335.00 1147090 3986322.00 169128 699174.00
WESTERN REGION	DENVER DISTRICT	132	66811.00 1699050 7006656.00 317992 1366204.00
	LOS ANGELES DISTRICT	52	8510.00 8587882 31023376.00 1457678 5485609.00

Multitude of options on the right click menu for Selections, Totals, Including/Excluding columns, etc.



Analysis Properties

Results Display Interactions Data

Views Run-time Options

- ☒ All Interactions
- ☒ Drill (when not a primary interaction)
- ☒ Move Columns
- ☒ Sort Columns
- ☒ Add/Remove Values
- ☒ Create/Edit/Delete Groups
- ☒ Create/Edit/Delete Calculated Items
- ☒ Display/Hide Sub-totals
- ☒ Display/Hide Running Sum
- ☒ Include/Exclude Columns

Each right click option has the ability to be turned on/off per analysis.

Favorites

The screenshot displays the Oracle Business Intelligence (BI) web interface. A 'Manage Favorites' dialog box is open in the foreground, showing a list of favorite reports including 'Daily Analysis', 'Month End Reports', '# Employees', '6.1 Published Reportig - Sales Summary', 'Annual Revenue', 'Eden Inc. Scorecard', 'Form Veterans 2004.xdo', and 'North America Sales.xdo'. The background shows the main BI dashboard with a 'Favorites' dropdown menu open, listing the same favorite reports. A yellow callout box points to the 'Favorites' dropdown menu, stating: 'Favorites can be specified and managed by end users for an optimized BI experience.' Another yellow callout box points to the 'Manage Favorites' dialog box, stating: 'Mark frequently used objects as Favorites for easy retrieval.'

Oracle Business Intelligence

Home | Alerts | Analysis and Interactive Reporting | Agent 3

Manage Favorites

Favorites

- Daily Analysis
- Month End Reports
- # Employees
- 6.1 Published Reportig - Sales Summary
- Annual Revenue
- Eden Inc. Scorecard
- Form Veterans 2004.xdo
- North America Sales.xdo

Help | OK | Cancel

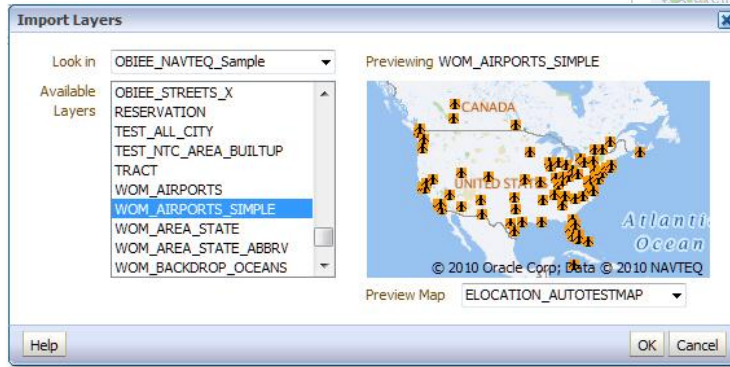
Favorites can be specified and managed by end users for an optimized BI experience.

Mark frequently used objects as Favorites for easy retrieval.

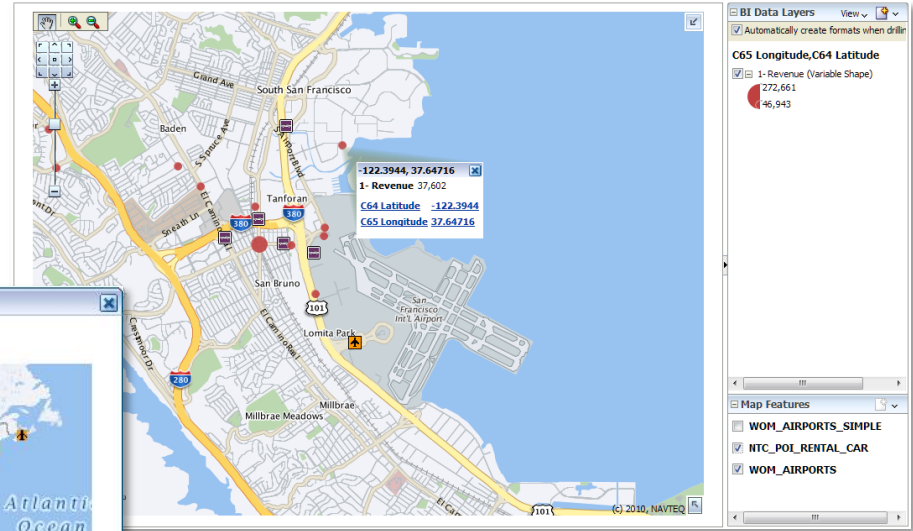
Map Views

New End User and Administrative Features

- Add Non-BI layers to Map Views
- Preview pane in Map Data Admin



Preview Pane for Layers in Map Data Admin



Map View with Non-BI Layers

BI Mobile



Redesigned Home Page

Information at-a-Glance



- Alerts at a glance
- Carousel view of recently-viewed content
- Thumbnails & previews improve discoverability of content
- Quick access to Favorites, Dashboards, Local content
- Air-Print
- Rich-content email

Find your Content easily



Browse for your dashboards using your familiar folder structures



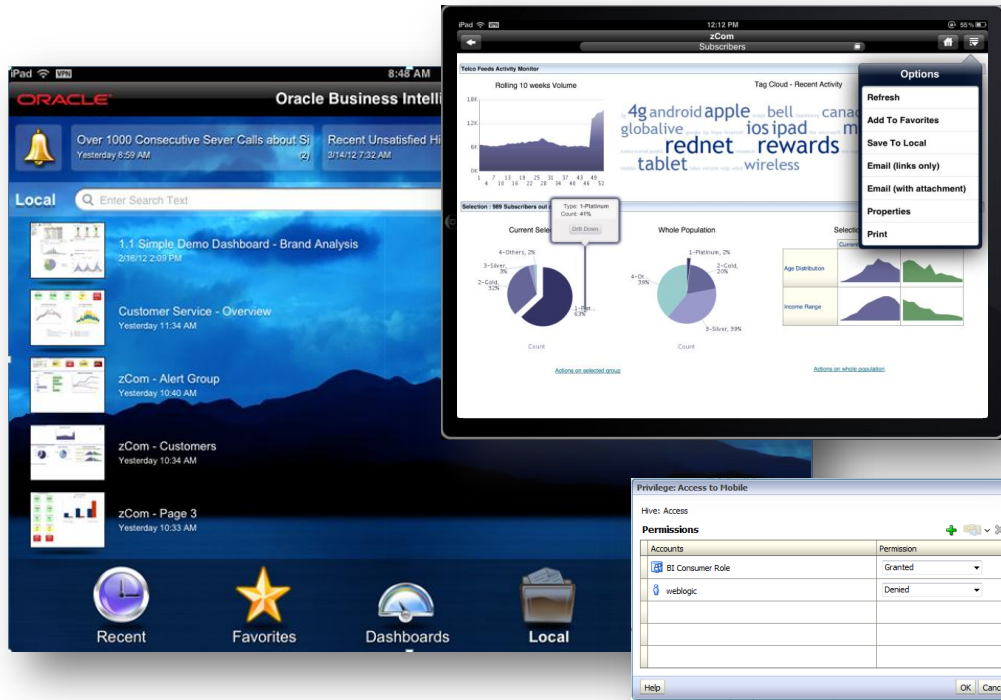
Favorites shortcut is always in synch with your desktop favorites



Search the catalog using the Search page when all else fails

Work Offline

Local Content Enables Always-Available BI



- Save content to device for offline consumption
- Refresh when online
- Share via e-mail
- Access to offline functionality controlled by user-privilege
- Refresh requires authentication
- Manage Privileges screen for access to Oracle BI Mobile

Uses familiar iOS controls

Prompts part of Native Shell



- Single-select, multi-select
- Advanced Search criteria
- Search-as-you-type
- Instant refreshes
- Collapsible prompts bar

Interact with Charts



- Tooltips
- Drag to navigate tooltips
- Drills
- Actions
- Master-Detail eventing (initiate)
- No change to graph definition
- Zero configuration changes

Collaborate with users

Rich Format Emails

- Share via Email
- Specially configured clickable link launches content in BI Mobile App
- Include BI content as attachment, or inline within email body
- App setting to include inline content



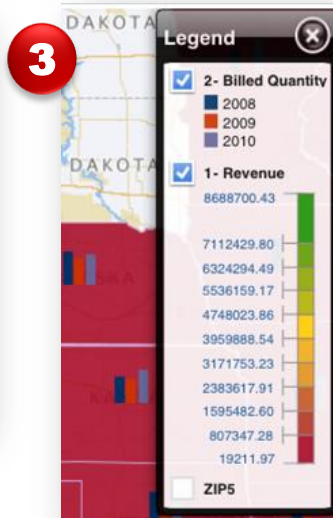
Drive accountability with OSSM

Rich new views of your business



- Full support for OSSM's strategic views of your business
- Drive accountability and monitor key business processes from your iPad
- Collaborate & Annotate content directly from Device

Improved geo-spatial capabilities for the mobile workforce



1. Redesigned Tooltips
2. Swipe to pan Map View
3. Redesigned Formats Panel

- Location identified by marker
- Map View centers on location
- Map View zooms in

Support for data dense visualizations

- Exalytics provides an immersive mobile experience, scalable to many thousands
- Trellis Views
 - Available as standalone analysis
 - Within Dashboards
 - Available Offline



Affect change by taking action where and when it matters

- Re-usable & shared across all views
 - Map Views
 - Tables & Pivots
 - Scorecards
 - Available on :
 - Columns, rows & values



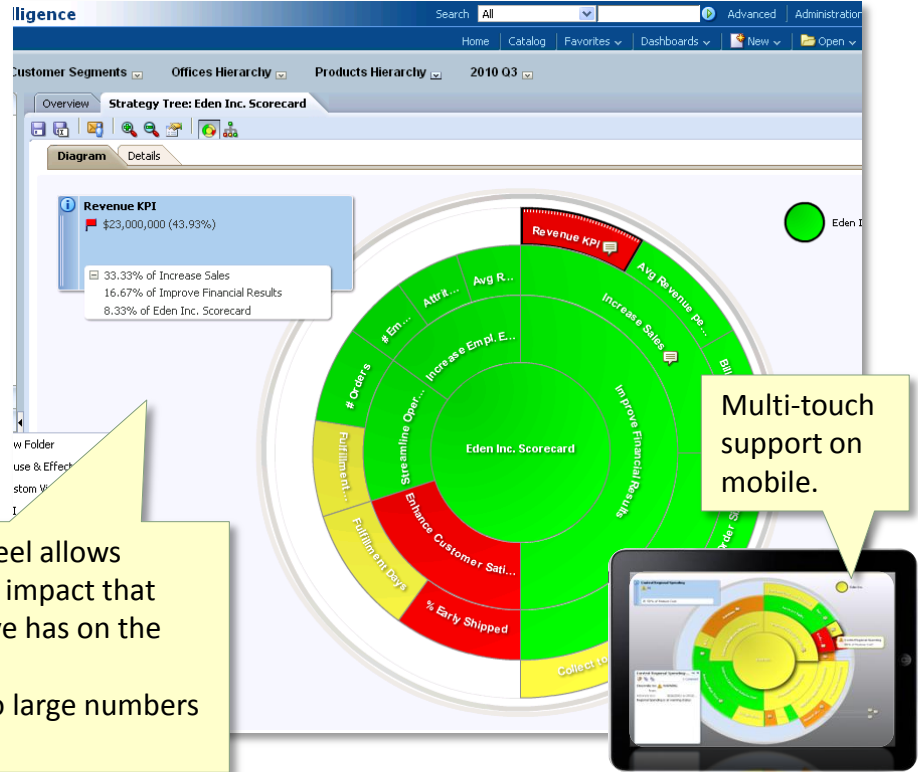
Oracle Scorecard & Strategy Management



Oracle Scorecard & Strategy Management

- New Contribution Wheel diagram
- OSSM views now available in Oracle BI Mobile
- Improvements to Scorecard views
 - Gradients
 - Sizeable Objectives/KPI Nodes

The Contribution Wheel allows companies to see the impact that each KPI and Objective has on the overall strategy. This diagram scales to large numbers of KPIs/Objective.



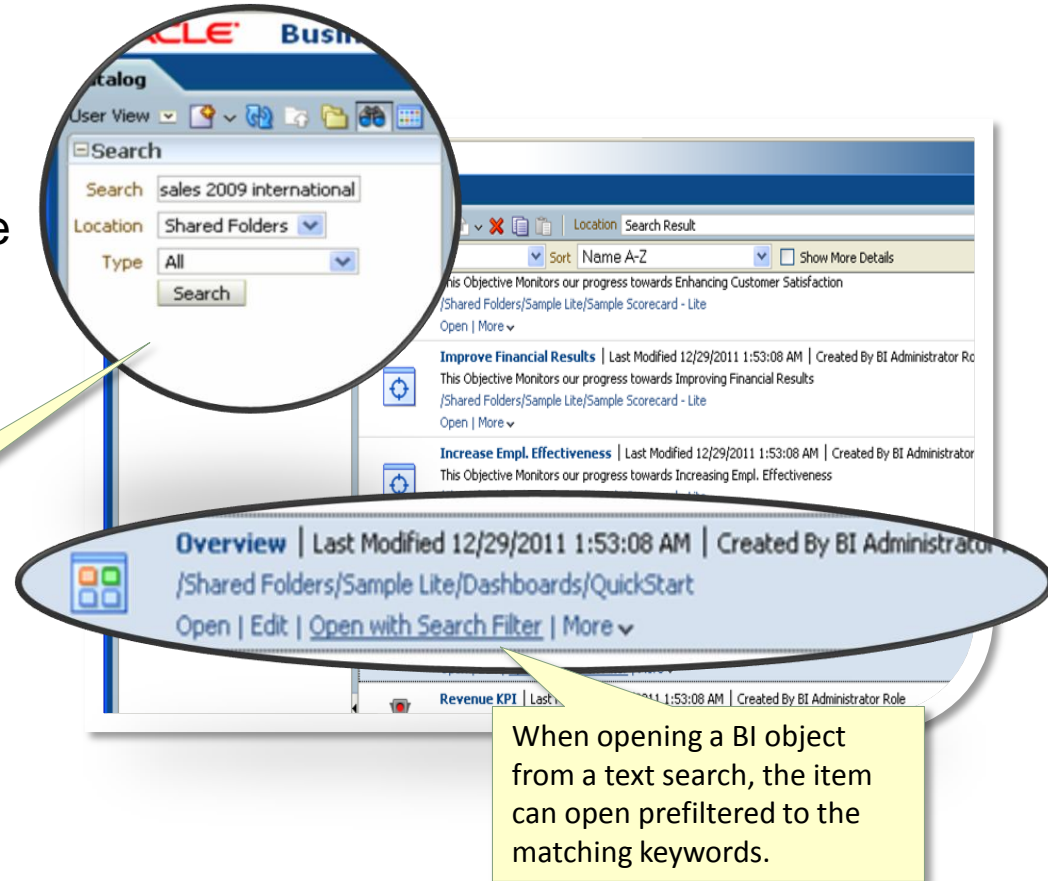
BI Search



BI Search

- Full text search available from the OBIEE UI
- Search criteria/context passed to report when drilling

Type keywords in BI UI and result set will contain full text search results.



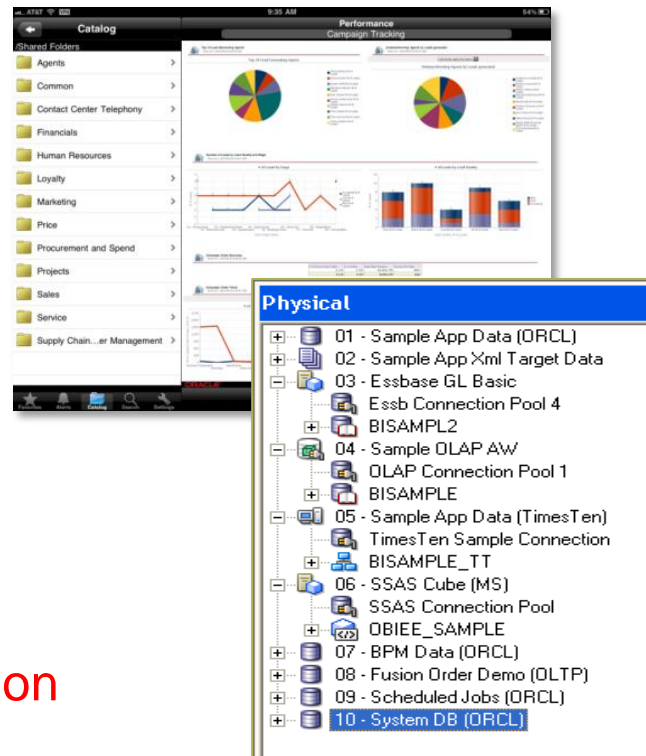
When opening a BI object from a text search, the item can open prefiltered to the matching keywords.

Supported Platforms



Certifications added

- Support added for Data Sources
 - Informix 11.5, Sybase ASE 15, and Netezza 6
- Support added for new platforms
 - Support for JDK6/7
 - Support for WLS both 10.3.5 and 10.3.6
- Support Added for Client Access
 - Browsers IE9, Chrome 12, and Firefox 6
 - Mobile Support for iOS5, iOS6
- Operating System Support
 - Solaris 11
- Please see the official release documentation for the most up-to-date information



OBIEE 11.1.1.6.0, 11.1.1.6.2 - In Summary

This release delivers a BI platform specially designed to leverage:

- Oracle Exalytics hardware's large memory, processors, concurrency, and other hardware features and system configurations.
- Enhancements to Times-Ten for Exalytics for analytical processing at in-memory speeds
- Dynamic user interface enhancements that complement large amounts of data to present business information in meaningful and compelling ways
- A new BI Server Summary Advisor for Exalytics for aggregate generation and persistence
- Essbase memory usage optimizations and concurrency improvements for Exalytics to deliver efficient distribution of processing
- BI Publisher performance, lifecycle, workflow and report creation enhancements
- New and enhanced Scorecard views and BI Mobile improvements
- Numerous Security, Management/Diagnostic and Lifecycle enhancements
- Certified BI and EPM Applications on Exalytics

Q&A

Hardware and Software

ORACLE®

Engineered to Work Together

ORACLE®

ORACLE®